

Geobox range 260 litres

550 litre bulk box

1200 x 800



1 260 litres - Ref. 27250

solid sides and base
two runners
Ext. dim.: L 1,000 X w 600 X h 662 mm
Ext. dim.: L 39.4 X w 23.6 X h 26.1"
Int. dim.: L 929 X w 544 X h 519 mm
Int. dim.: L 36.6 X w 21.4 X h 20.4"
Wt: 13.50 Kg/29.7 lbs., Colour: **brown-red**.



2 260 litres - Ref. 27251

minimum order item
ventilated sides and base
two runners
dimensions as Geobox ref. 27250
Wt: 12.70 Kg/27.9 lbs., Colour: brown-red.



6 550 litres - Ref. 28600

solid sides and base
two runners
Ext. dim.: L 1,200 X w 800 X h 850 mm
Ext. dim.: L 47.2 X w 31.5 X h 33.5"
Int. dim.: L 1,130 X w 725 X h 690 mm
Int. dim.: L 44.5 X w 28.5 X h 27.2"
Wt: 27.00 Kg/59.4 lbs., Colour: grey
Unit load: 400 kg/880 lbs

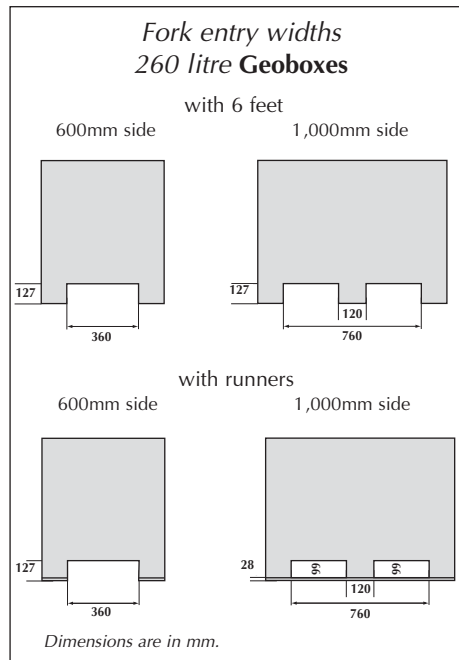


3 260 litres - Ref. 27270

solid sides and base
six feet
Ext. dim.: L 1,000 X w 600 X h 662 mm
Ext. dim.: L 39.4 X w 23.6 X h 26.1"
Int. dim.: L 929 X w 544 X h 519 mm
Int. dim.: L 36.6 X w 21.4 X h 20.4"
Wt: 12.70 Kg/28.0 lbs., Colour: brown-red.

260 litres - Ref. 27271

ventilated sides and base
six feet
dimensions as Gearbox ref. 27270
Wt: 11.90 Kg/26.2 lbs., Colour: brown-red



550 litres - Ref. 28601

ventilated sides and solid base with two runners
dimensions as ref. 28600
Wt: 26 Kg/57 lbs., colour grey

550 litres - Ref. 28602

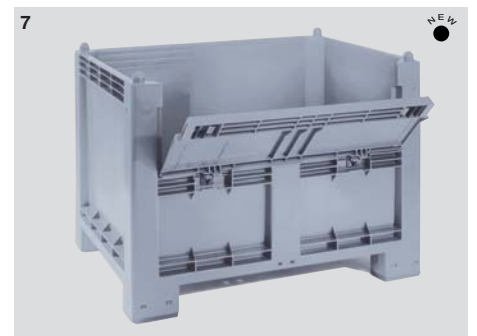
solid sides and base with four feet
dimensions as ref. 28600
Wt: 25 Kg/55 lbs., colour grey

550 litres - Ref. 28603

ventilated sides and solid base with four feet
dimensions as ref. 28600
Wt: 24 Kg/53 lbs., colour grey

550 litres - Ref. 28610

as ref. 28600 with drop-door on long side
door dim.: 1,000 x 340mm / 39.4 x 13.4"



7 550 litres - Ref. 28612

as ref. 28602 with drop-door on long side
door dim.: 1,000 x 340mm / 39.4 x 13.4"

550 litres - Ref. 28672

as ref. 28600 with four 125mm Ø wheeled castors
height: 990mm / 39.0"
Wt: 30 Kg/66 lbs.
Unit load: 150 Kg/330 lbs.

Ref. 64600

Lid for 550 litre bulk boxes
(does not fit ref. 28672)