

Recypal

Pallet loading for Recypal with three runners - for evenly distributed load:

- dynamic: up to 1.0 tonne
- static: up to 4.0 tonnes
- racking: up to 500 kg (depending on type and configuration of load).



1 Ref. E3300

pallet with three runners
solid deck
Dim.: L 1,200 X w 1,000 X h 150 mm
Dim.: L 47.3 X w 39.4 X h 5.9"
Wt: 25.0 kg/55.0 lbs.
Colour: dark grey.

Ref. E3302

pallet with three runners
solid deck with collar
Dim.: L 1,200 X w 1,000 X h 157 mm
Dim.: L 47.3 X w 39.4 X h 6.2"
Wt: 25.2 kg/55.4 lbs.
Colour: dark grey.

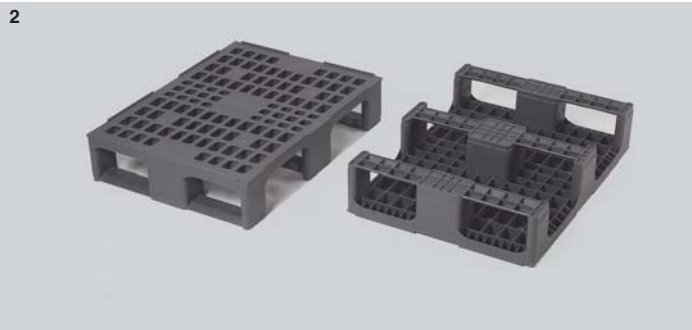
800 x 600 handling unit

- Industrial distribution: supply of parts direct to work station or production line, its small size makes it easier to access than conventional 1200 x 1000mm pallets, saving valuable time unloading
- Retail distribution: compact size for in-store deliveries and ideal for point-of-sale display
- 4-way entry allows easy access by fork lifts and pallet trucks
- Optional lid, with or without adjustable straps, secures load and allows block stacking (see p. 93)
- Identification options include hot-foil printing and radio-frequency tags
- Lids include pimple-pads, for easy removal of adhesive labels, and optional label holder (see p. 93)
- Dynamic load: up to 750 Kg
- Static load: up to 2.0 tonnes (depending on type and configuration of load)



Distribution pallets

800 x 600



2 Ref. 3G303

pallet with 3 runners
ventilated deck with 7mm collar
Dim.: L 800 x w 600 x h 167mm
Dim.: L 31.5 x w 23.6 x h 6.5"
Weight: 6.2 Kg/13.6 lbs.
Colour: grey



3 Ref. 3G301

as ref. 3G303 without collar
Height: 160mm / 6.3"



4 Ref. 3G305

pallet with 3 runners
ventilated deck with 20mm extended collar (collar off-set for full 800 x 600mm deck)
Dim.: L 816 x w 616 x h 180mm
Dim.: L 32.1 x w 24.3 x h 7.1"
Weight: 6.4 Kg/14.1 lbs.
Colour: grey

Distribution Pallet (dimensions in mm)

